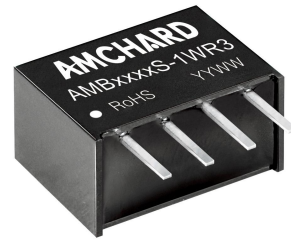


### Features

1. Wide operating temperature range: -40°C to +105°C
2. Up to 85% efficiency
3. No load current as low as 5mA
4. Ripple as low as 30mVp-p
5. Sustainable short-circuit protection
6. Isolation:1500VDC
7. Fixed voltage input, Output 1W, Isolated, Non Stabilized voltage, Single Output, SIP package.



3 years  
Warranty

### Model Numbering

## AMBxxxxS-1WR3



### Selection Guide

Product model	Input Voltage Standard value(range)	Output Voltage	Output Current (mA) (Max./Min.)	Efficiency % (Min./Typ.)	Maximum capacitive load (µF)
AMB0303S-1WR3	3.3VDC (2.97-3.63)	3.3	303/30	75/80	2400
AMB0305S-1WR3		5	200/20	78/83	2400
AMB0309S-1WR3		9	111/12	78/83	1000
AMB0312S-1WR3		12	84/9	78/84	560
AMB0315S-1WR3		15	67/7	78/84	560
AMB0324S-1WR3		24	42/4	78/85	220

Product model	Input Voltage Standard value(range)	Output Voltage	Output Current (mA) (Max./Min.)	Efficiency % (Min./Typ.)	Maximum capacitive load ( $\mu$ F)
AMB0503S-1WR3	5VDC (4.5-5.5)	3.3	303/30	75/80	2400
AMB0505S-1WR3		5	200/20	78/83	2400
AMB0509S-1WR3		9	111/12	78/83	1000
AMB0512S-1WR3		12	84/9	78/84	560
AMB0515S-1WR3		15	67/7	78/84	560
AMB0524S-1WR3		24	42/4	78/85	220
AMB0903S-1WR3	9VDC (8.1-9.9)	3.3	303/30	75/80	2400
AMB0905S-1WR3		5	200/20	78/83	2400
AMB0909S-1WR3		9	111/12	78/83	1000
AMB0912S-1WR3		12	84/9	78/84	560
AMB0915S-1WR3		15	67/7	78/84	560
AMB0924S-1WR3		24	42/4	78/85	220
AMB1203S-1WR3	12VDC (10.8-13.2)	3.3	303/30	75/80	2400
AMB1205S-1WR3		5	200/20	78/83	2400
AMB1209S-1WR3		9	111/12	78/83	1000
AMB1212S-1WR3		12	84/9	78/84	560
AMB1215S-1WR3		15	67/7	78/84	560
AMB1224S-1WR3		24	42/4	78/85	220
AMB1503S-1WR3	15VDC (13.5-16.5)	3.3	303/30	75/80	2400
AMB1505S-1WR3		5	200/20	78/83	2400
AMB1509S-1WR3		9	111/12	78/83	1000
AMB1512S-1WR3		12	84/9	78/84	560
AMB1515S-1WR3		15	67/7	78/84	560
AMB1524S-1WR3		24	42/4	78/85	220
AMB2403S-1WR3	24VDC (21.6-26.4)	3.3	303/30	75/80	2400
AMB2405S-1WR3		5	200/20	78/83	2400
AMB2409S-1WR3		9	111/12	78/83	1000
AMB2412S-1WR3		12	84/9	78/84	560
AMB2415S-1WR3		15	67/7	78/84	560
AMB2424S-1WR3		24	42/4	78/85	220

## Input Characteristics

Parameter	Conditions	Min.	Typ.	Max.	Units	
Input current (Rated Load)	Nominal voltage input@3.3VDC	3.3VDC Output	--	385	410	mA
		5VDC/7.2VDC Output	--	380	400	mA
		9VDC/12VDC Output	--	375	390	mA
		15VDC/24VDC Output	--	360	385	mA
	Nominal voltage input@5VDC	3.3VDC Output	--	270	285	mA
		5VDC/7.2VDC Output	--	245	255	mA
		9VDC/12VDC Output	--	240	254	mA
		15VDC/24VDC Output	--	235	253	mA
	Nominal voltage input@12VDC	3.3VDC Output	--	110	120	mA
		5VDC/7.2VDC Output	--	105	115	mA
		9VDC/12VDC Output	--	103	110	mA
		15VDC/24VDC Output	--	100	110	mA
	Nominal voltage input@15VDC	3.3VDC Output	--	85	90	mA
		5VDC/7.2VDC Output	--	84	88	mA
		9VDC/12VDC Output	--	83	87	mA
		15VDC/24VDC Output	--	82	86	mA
	Nominal voltage input@24VDC	3.3VDC Output	--	56	62	mA
		5VDC/7.2VDC Output	--	54	59	mA
		9VDC/12VDC Output	--	53	58	mA
		15VDC/24VDC Output	--	52	57	mA
Input current (No-load)		--	5	20	mA	
Reflected ripple current		3	15	20	mA	
Input impulse voltage	1sec. max.	3.3VDC/5VDC Input	-0.7	--	9	VDC
		9VDC Input	-0.7	--	12	VDC
		12VDC Input	-0.7	--	18	VDC
		15VDC Input	-0.7	--	21	VDC
		24VDC Input	-0.7	--	30	VDC
Input filter	Capacitive filtering					
Remarks: <b>This product does not support hot plug</b>						

## Output Characteristic

Parameter	Conditions	Min.	Typ.	Max.	Units	
Output voltage accuracy		See Figure 3 (envelope curve)				
Linear regulation rate	Input voltage variation +/- 1%	3.3VDC Output	--	--	+/-1.5	%
		Other outputs	--	--	+/-1.2	%
Load regulation rate	10% to 100% load	3.3VDC Output	8	12	20	%
		5VDC Output	5	10	15	%
		9VDC Output	3	8	10	%
		12VDC Output	3	7	10	%
		15VDC Output	3	6	10	%
		24VDC Output	2	5	10	%
Ripple & Noise	20MHz bandwidth	--	30	100	mVp-p	
Temperature drift coefficient	100% load	--	+/-0.03	--	%/°C	
Short circuit protection	Sustainable, Self-healing					
Note: The testing method for ripple and noise is the parallel line testing method.						

## General Characteristics

Parameter	Conditions	Min.	Typ.	Max.	Units
Isolation voltage	Input-output, Test time 1 minute, Leakage current less than 1 mA	1500	--	--	VDC
Insulation resistance	Input-output, Insulation voltage 500VDC	1000	--	--	MΩ
Isolation capacitance	Input-output, 100KHz/0.1V	--	20	50	pF
Working temperature	Temperature ≥ 85 °C for derating (See Figure 4)	-40	--	+105	°C
Storage temperature		-55	--	+125	°C
Storage humidity	Non condensing	--	--	95	%RH

Parameter	Conditions	Min.	Typ.	Max.	Units
Housing temperature rise during operation	Ta=25 °C, Nominal input, Full output	--	15	25	°C
Soldering temperature resistance of pins	The distance from the welding spot to the shell is 1.5mm, 10 seconds	--	--	300	°C
	REFLOW:Peak temperature Tc ≤ 245 °C, maximum time above 217 °C	--	--	245	°C
Switching frequency	Full load, Nominal input voltage	100	270	--	kHz
Mean time between failures 【MTBF】	MIL-HDBK-217F@25°C	3500	--	--	kHours

### Physical Characteristics

Parameter	Content
Housing material	Black flame retardant and heat-resistant plastic (UL94V-0)
Overall dimensions	11.60 x 6.00 x 10.16mm
Weight	1.3g(Typ.)
Cooling mode	Natural air cooling

### EMC Characteristics

Parameter	Category	Content
EMI	Conductive disturbance	CISPR32/EN55032 CLASS B (The recommended circuit is shown in Figure 2)
	Radiation disturbance	CISPR32/EN55032 CLASS B (The recommended circuit is shown in Figure 2)
EMS	Electrostatic discharge	IEC/EN61000-4-2 Contact ±4KV perf. Criteria B

### Circuit Design and Application

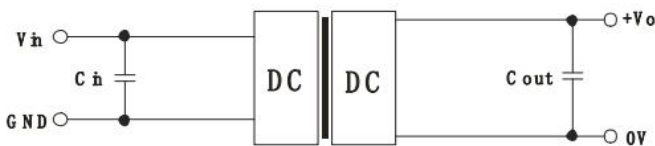


Figure 1: Application circuit

Table 1: Recommended Capacitive Load Values

Vin(VDC)	Cin(μF)	Vo(VDC)	Cout(μF)
Nominal voltage	1-10	Nominal voltage	2.2-22

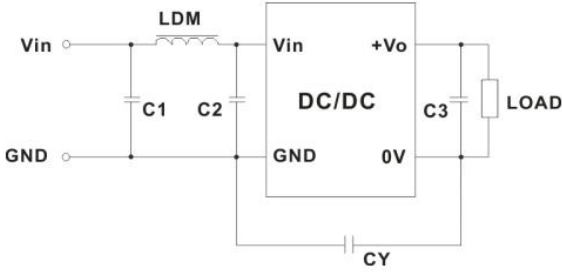


Figure 2: EMC Typical Recommended Circuits

Table 2:  
Recommended Circuit Parameter Values

Category	Component	Value
EMI	C1	4.7μF /50V
	C2	4.7μF /50V
	C3	2.2-22μF /50V
	CY	270pF/2kV
	LDM	6.8μH

1. Typical application: If further reduction of input and output ripple is required, a capacitor filter network can be connected at the input and output ends. The application circuit is shown in Figure 1. However, suitable filter capacitors should be selected. If the capacitance is too large, it may cause overcurrent or poor startup of the power supply. For each output, while ensuring safe and reliable operation, the recommended capacitance load values are shown in Table 1.
2. EMC requirements: For situations with high EMC requirements, a typical EMC recommended circuit is shown in Figure 2.
3. Input requirements: Ensure that the fluctuation range of the input voltage does not exceed the upper and lower limits of the input voltage specified in this data sheet, and the input power must be greater than the output power specified in this data sheet. For situations with a 24V input voltage, it is recommended to connect a TVS tube between the positive and negative input pins for protection (recommended parameters for TVS tubes: 30V, bidirectional, SOD-123 packaging).
4. Output load requirements: Try to avoid using it without load as much as possible; When the actual power of the load is less than 10% of the rated output power in this data sheet, or when it needs to be used in no-load situations, it is recommended to connect a load resistor externally at the output end. The load resistor can be calculated according to 5-10% of the rated power in this data sheet. The calculation formula for the load resistor value is  $R_L = U_{out}^2 / (P_{out} * 10\%)$ .
5. Overload protection: Under normal working conditions, the output circuit of this product has no protection function for overload situations. The simplest method is to connect a self recovery fuse in series at the input end, or add a circuit breaker outside the circuit; Or during design and selection, the actual power of the circuit should be around 60-80% of the rated power in this data sheet.

### Product Characteristic Curve

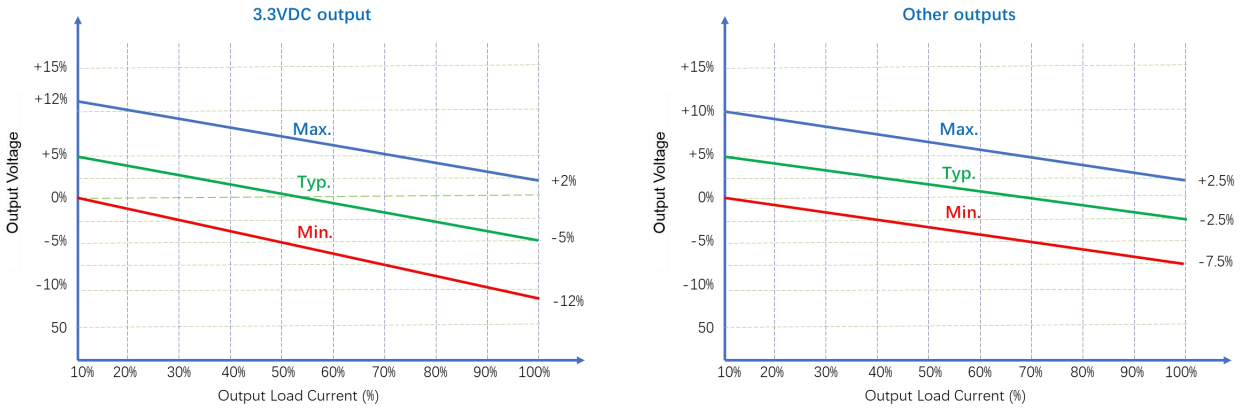


Figure 3: Voltage tolerance envelope

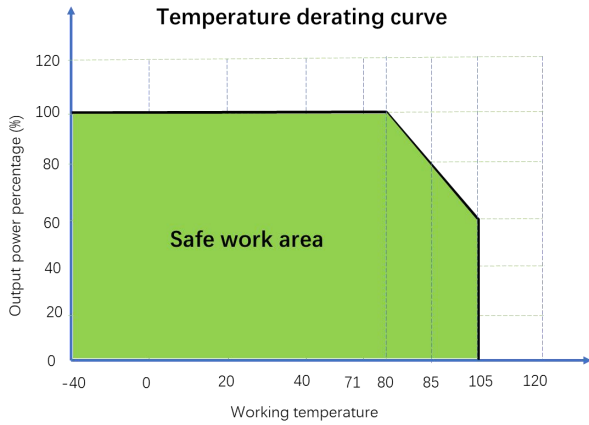


Figure 4: Temperature Derating Curve

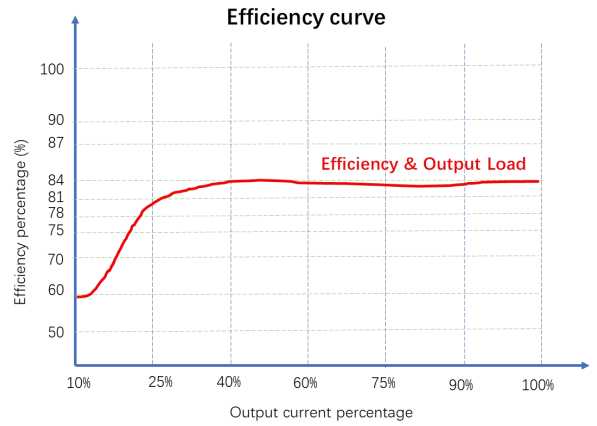


Figure 5: Efficiency VS Output Load (Nominal Voltage Input)

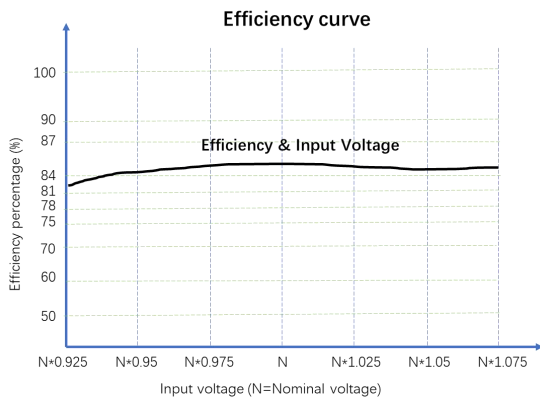


Figure 6: Efficiency VS Input Voltage (100% Load)

### Overall Dimensions and Pin Functions

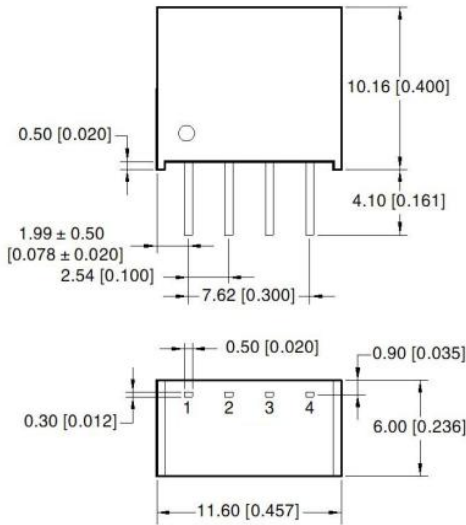


Figure 7: Overall dimensions

Table 3: Pin Function Table

Pin	Function
1	GND
2	Vin
3	0V
4	+Vo

Note:  
 Dimensions in mm[inch]  
 Terminal diameter tolerance:  $\pm 0.10\text{mm}$   
 Undeclared tolerance:  $\pm 0.50\text{mm}$

### Notes & Instructions

1. The input voltage shall not exceed the specified range value, otherwise permanent and unrecoverable damage may be caused;
2. Unless otherwise specified, the parameters in this manual are measured at 25 °C, 40%~75% humidity, input nominal voltage and output pure resistance mode under full load;
3. All index test methods are based on the company's enterprise standards.
4. The copyright and the final interpretation right of the product belong to AMCHARD.