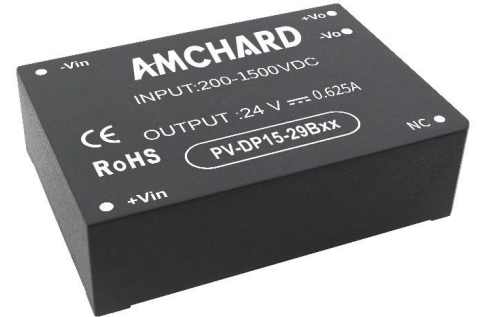


Features:

1. Extra wide input voltage range (200-1500VDC)
2. Size: 89*63*25mm
3. No-load power consumption < 0.6W
4. Input under voltage/reverse connection prevention, output short circuit/over load/over voltage protection
5. Operating temperature range -40°C to +70°C
6. 4000VAC isolation voltage
7. 100% high temperature aging and testing
8. 5 years warranty



Selection Guide

Model	Input Voltage	Rated Power (W)	Output Voltage (V)	Output Current (A)	Ripple & Noise (mVp-p)	Efficiency (%)
PV-DP15-29B05	200-1500VDC	10	5	2	100	76
PV-DP15-29B12		15	12	1.25	100	78
PV-DP15-29B15		15	15	1	100	80
PV-DP15-29B24		15	24	0.625	100	83

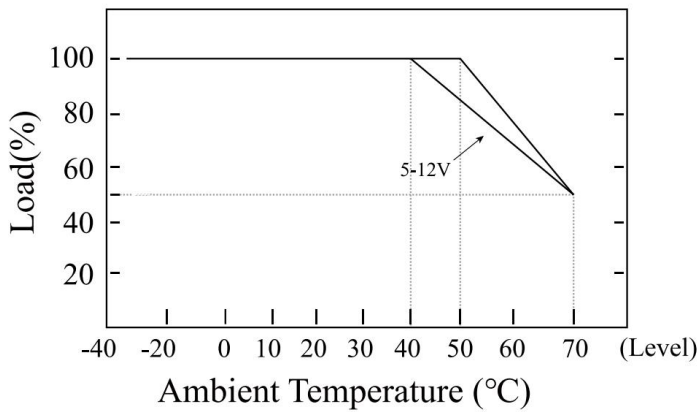
Specifications

OUTPUT	Voltage Tolerance	±1.0% (±1.5% max)				
	Line Regulation	±0.25%				
	Load Regulation	±0.25%				
	Setup, Rise Time (Typ.)	2000ms/900VDC at full load				
	Hold Up Time (Typ.)	20ms/900VDC at full load				
	Ripple & Noise (Max.) (Note 2.)	150mV				
INPUT	Voltage Range	200-1500VDC				
	Nominal Voltage	900VDC				
	Current (Typ.)	120mA/200VDC 30mA/900VDC 16mA/1500VDC				
	Inrush Current (Typ.)	30A/200VDC 90A/1500VDC				
	External Fuse Recommended	4A/1500V				
PROTECTION	Under Voltage	Under voltage protection point: 130-175V, under voltage release point: 155-200V				
	Reverse Connection Prevention	Support				
	Over Load	≥120% load, self-recovery after troubleshooting				
	Short Circuit	Hiccup mode, self-recovery after troubleshooting				
	Over Voltage (Note 4.)	Voltage	5VDC	12VDC	15VDC	24VDC
		Range	≤8VDC	≤20VDC	≤20VDC	≤30VDC
ENVIRONMENT	Working Temp.	-40°C to +70°C (Refer to "Derating curve")				
	Working Humidity	85%RH max				
	Storage Temp., Humidity	-40°C to +85°C, 10-95%RH				
	Temp. Coefficient	0.03%/ (0-50°C)				
	Vibration	10-500Hz, 2G, 10min./1cycle, 60min.each along X, Y, Z axes				
SAFETY & EMC (NOTE 3.)	Safety Standards	EN62109-1, BS EN62109-1				
	Isolation Voltage	I/P-O/P: 4000VAC				
	Isolation Resistance	I/P-O/P: >100M Ohms/500VDC 25°C 70% RH				
	EMC Emission & Immunity	EN55011, EN55032 (CISPR32) CLASS B				
	ESD	IEC/EN 61000-4-2 level 4 Contact ±8kV/Air ±15kV (Refer to "Typical Application")				
	RF	IEC/EN 61000-4-3 (Refer to "Typical Application")				
	EFT	IEC/EN 61000-4-4 level 3 2kV (Refer to "Typical Application")				
	Surge	IEC/EN 61000-4-5 level 4 1kV (2KV Refer to "Typical Application")				
OTHERS	MTBF	300K hrs min. MIL-HDBK-217F (25°C)				
	Dimension	89*63*25mm (L*W*H)				
	Weight	180g/PCS 9kg/Carton				
	Package	48 PCS/Carton				
	Carton Size	360*300*250mm				

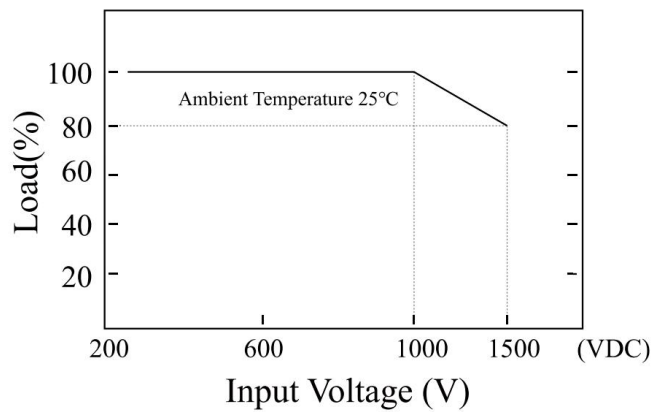
NOTE	1. All parameters not specially mentioned, are measured when TA=25°C, humidity<75%, input nominal voltage and output rated load.
	2. Measurement method of ripple & noise: Parallel line test method shall be adopted. Meanwhile, 0.1uF high-frequency ceramic capacitor and one 47uF electrolytic capacitor shall be connected in parallel at the terminal for measurement under 20Mhz bandwidth and connected according to "typical application". Element parameters shall be the same as those measured in the table.
	3. The power supply is regarded as a component in the system, and electromagnetic compatibility shall be confirmed in combination with the terminal equipment.
	4. This series of overvoltage protection protects the subsequent circuit in case of module abnormality through the peripheral TVS tube.

Typical Characteristics Curve

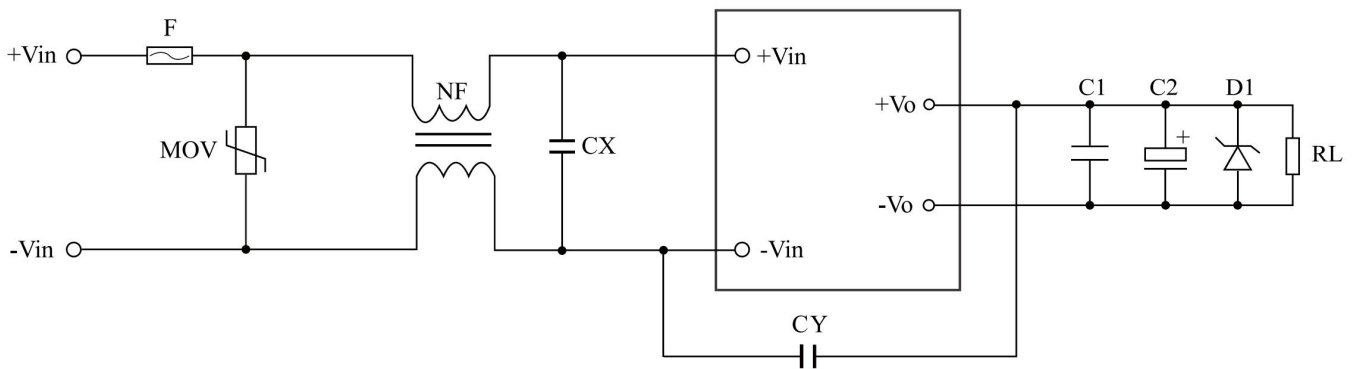
Temperature Derating Curve



Input Voltage Derating Curve



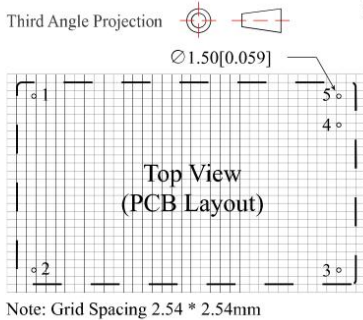
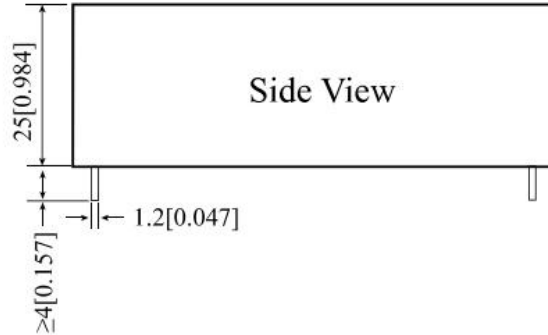
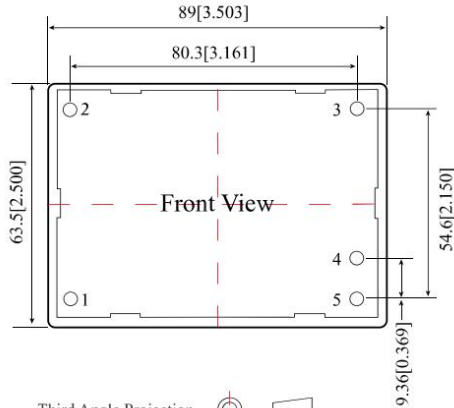
Typical Application



Position Model	F (Optional)	MOV (Required)	NF	CX	CY	C1(Optional)	C2(Optional)	D1 (Optional)
PV-DP15-29B05	4A/1500V	Varistors 20D162K	Common mode inductance 1- 10mH	224K/2000V	222K/2000V	104K/50V (Ceramic capacitor)	100uF-1000uF/16V	P6KE7.5A
PV-DP15-29B12							100uF-1000uF/16V	P6KE20A
PV-DP15-29B15							100uF-1000uF/25V	P6KE20A
PV-DP15-29B24							100uF-1000uF/35V	P6KE30A

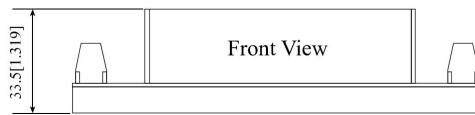
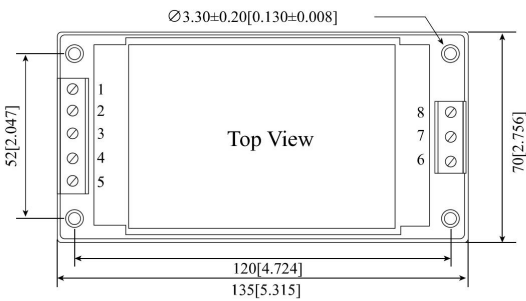
Mechanical Specification

Standard type package



Pin	Function
1	-Vin
2	+Vin
3	NC
4	-Vo
5	+Vo

Wire-type package



Pin	Function
1	-Vin
2	NC
3	NC
4	NC
5	+Vin
6	NC
7	-Vo
8	+Vo

NOTE: Unit size: mm[inch] Unmarked tolerances: ± 0.5 mm

Notes:

1. If the product works under the minimum required load, it cannot guarantee that the performance of the product complies with all the performance indicators in this manual;
2. The maximum capacitive load is tested under the input voltage range and full load condition;
3. Unless otherwise stated, all indexes in this manual are measured at $T_a=25^\circ\text{C}$, humidity $<75\%\text{RH}$, nominal input voltage and rated output load;
4. All index testing methods in this manual are based on the enterprise standards of the company;
5. Our company can provide product customization, specific needs can directly contact our technical staff;
6. AMCHARD reserves the right to make changes to the product at any time without notice.

GUANGZHOU AMCHARD-POWER TECHNOLOGY CO., LTD.

www.amchard-power.com

Mail: info@amchard-power.com